

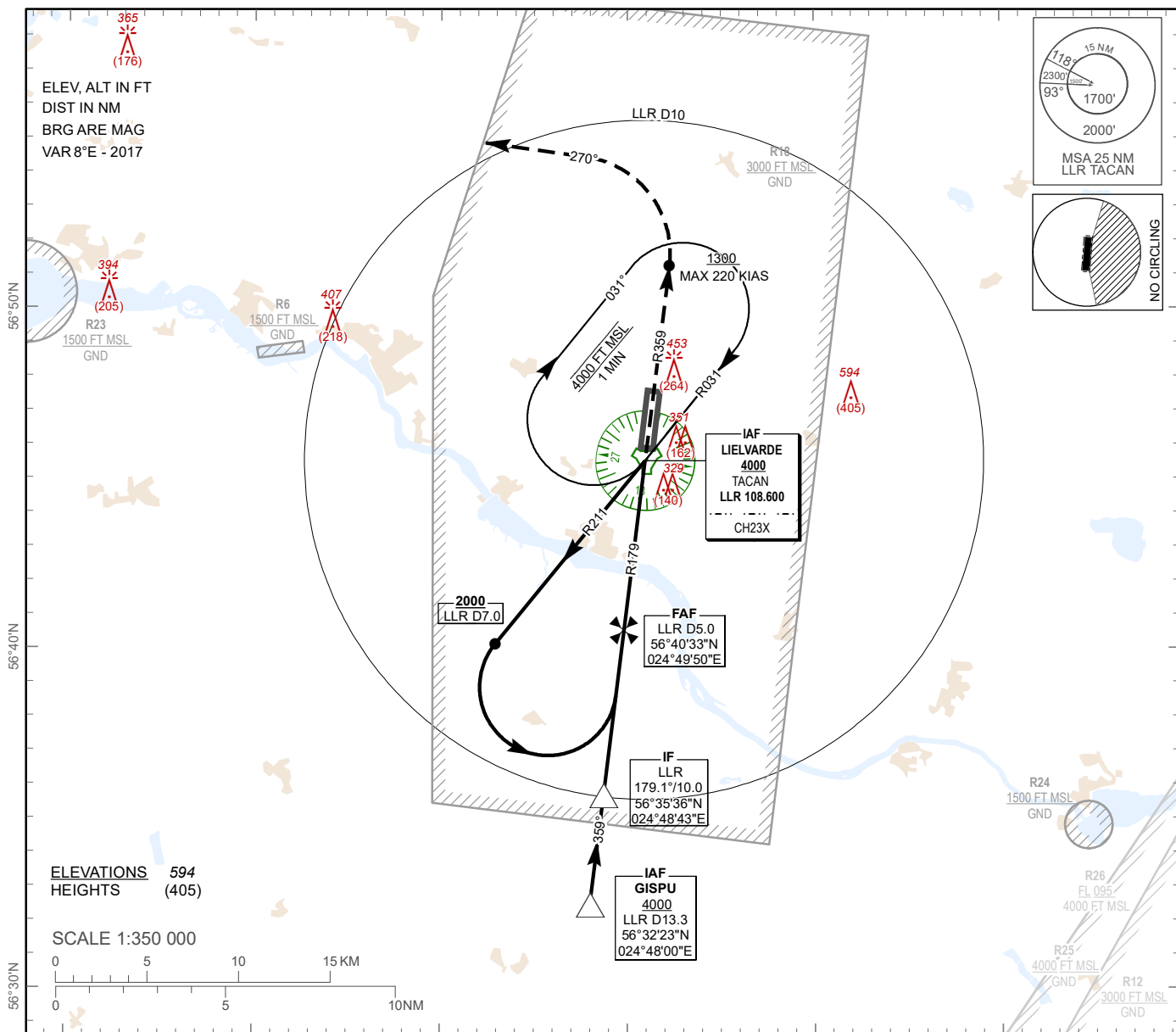
INSTRUMENT APPROACH CHART

AERODROME ELEV 207 ft
HEIGHTS RELATED TO
THR RWY 36 - ELEV 189 ft

RIGA APP	129.925
	134.850 (HX)
TWR	118.155
ATIS	124.805

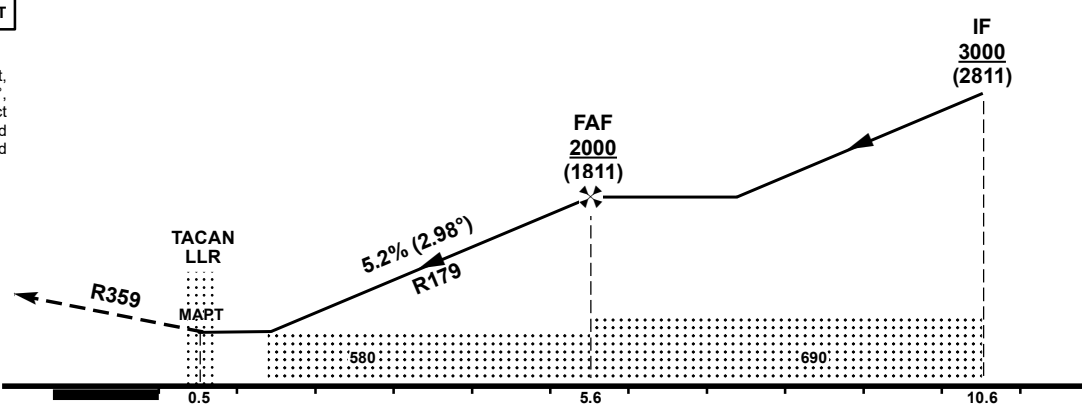
LIELVARDE (MIL) (EVGA)

TACAN RWY 36



TRANSITION ALT 5000 FT

MISSED APPROACH
 Climb on R359 to 1300 ft, turn left on track 270°, climbing to 2500 ft, expect radar vectoring. Missed approach turn speed limited 220 KIAS maximum.



OCA (H)		A	B	C	D
Straight-in Approach	TACAN	580 (390)			
	Circling	750 (550)	850 (640)	900 (690)	

DIST LLR	4.5	3.5	2.5	1.5	0.5
DIST THR	5	4	3	2	1
ALT	1820	1500	1180	870	580
HGT	(1631)	(1311)	(991)	(681)	(391)

Timing not authorized for defining the MAPt

GS	kt	80	100	120	140	160	180
Rate of descent (5.2%)	ft/min	420	530	640	740	850	960
FAF-MAPT (5.5 NM)	min:sec	03:47	03:01	02:31	02:10	01:53	01:41

TACAN RWY 36

TACAN approach to RWY 36 from LLR TACAN, GISPU	
Fix/point	Coordinates
LLR TACAN (IAF)	56°45'32.3"N 024°50'57.6"E
GISPU (IAF) D13.29 LLR	56°32'23.3"N 024°47'59.8"E
LLR D10.05 LLR R179.10 (IF)	56°35'35.7"N 024°48'42.9"E
LLR D5.04 LLR R179.10 (FAF)	56°40'32.9"N 024°49'49.9"E
LLR TACAN (MAPT)	56°45'32.3"N 024°50'57.6"E
THR RWY 36	56°46'04.43"N 024°51'04.86"E
Final approach descent angle is 2.98°	